

University of Tennessee Center for Industrial Services

April 2012

CIS History

The Center for Industrial Services was established through legislation by the Tennessee General Assembly on October 8, 1963 to provide services to Tennessee business and industry.

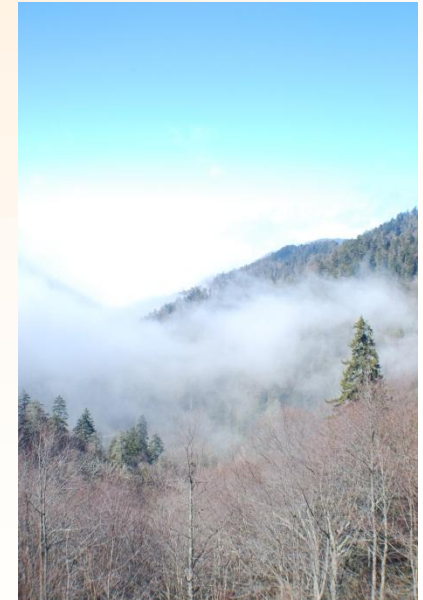
CIS is one of the oldest industrial extension programs nationwide. The funding for CIS was provided by state appropriated dollars in support the University's public service mission.

Services were :

- *predominately university-based
- *pre-paid by taxpayer dollars,
- *focused on awareness building and short term technical assistance
(matching faculty to the problems)

CIS Vision

A better Tennessee...with sustainable economic growth, innovative and prosperous businesses, high quality jobs, and a safe and healthy workplace



CIS Mission

Help Tennessee business succeed, grow and
create high quality jobs



CIS Customers

- Tennessee manufacturers are our primary market
- Some CIS programs also serve small businesses and entrepreneurs
- Public organizations and partners that can benefit from CIS technical skills



Response to Customer Needs

- 1986 –Procurement Technical Assistance Center (DLA)
- 1986 – TDEC Waste Reduction Assistance Program (WRAP)
- 1992 – TDEC Solid Waste
- 1994 –NIST Manufacturing Extension Partnership (MEP)
- 2006 -- EDA University Center
- 2008 – OSHA Training Institute
- 2010 –Tennessee Solar Institute



The Dialogue

- 2015 Population: 9 to 10 billion people
- How will:
 - water be used?
 - energy be used?
 - hazardous waste be reduced?
 - solid waste be reduced, recycled?
- Feel Good Efforts versus Profitability
- Large Corporations versus Privately-held companies
- Various Sustainability Definitions

The Definition

Sustainability

- Lean Manufacturing (fee-based, good ROI)
- Environment (free assessments)
- Energy (free assessments)

Economy, Energy, Environment (E3)

Department of Commerce

Department of Energy

Environmental Protection Agency

Department of Labor
Small Business Administration
Department of Agriculture

E3 in Bartlett

February 23, 2012 (Bartlett, TN – Breakfast Kick-off Meeting)

Bartlett Area Chamber of Commerce (existing industry)

Tennessee Technological University (energy assessments)

University of Tennessee Center for Industrial Service (lean manufacturing
and environment assistance to manufacturers)

Pathway Lending (low interest, term friendly loans)

Pew Charitable Trusts (industrial efficiency, industrial energy efficiency)

March 2012

Invited five companies resulting in two “sustainability” assessments

E3 in Binghampton

Memphis and Shelby County Office of Sustainability (existing industry)

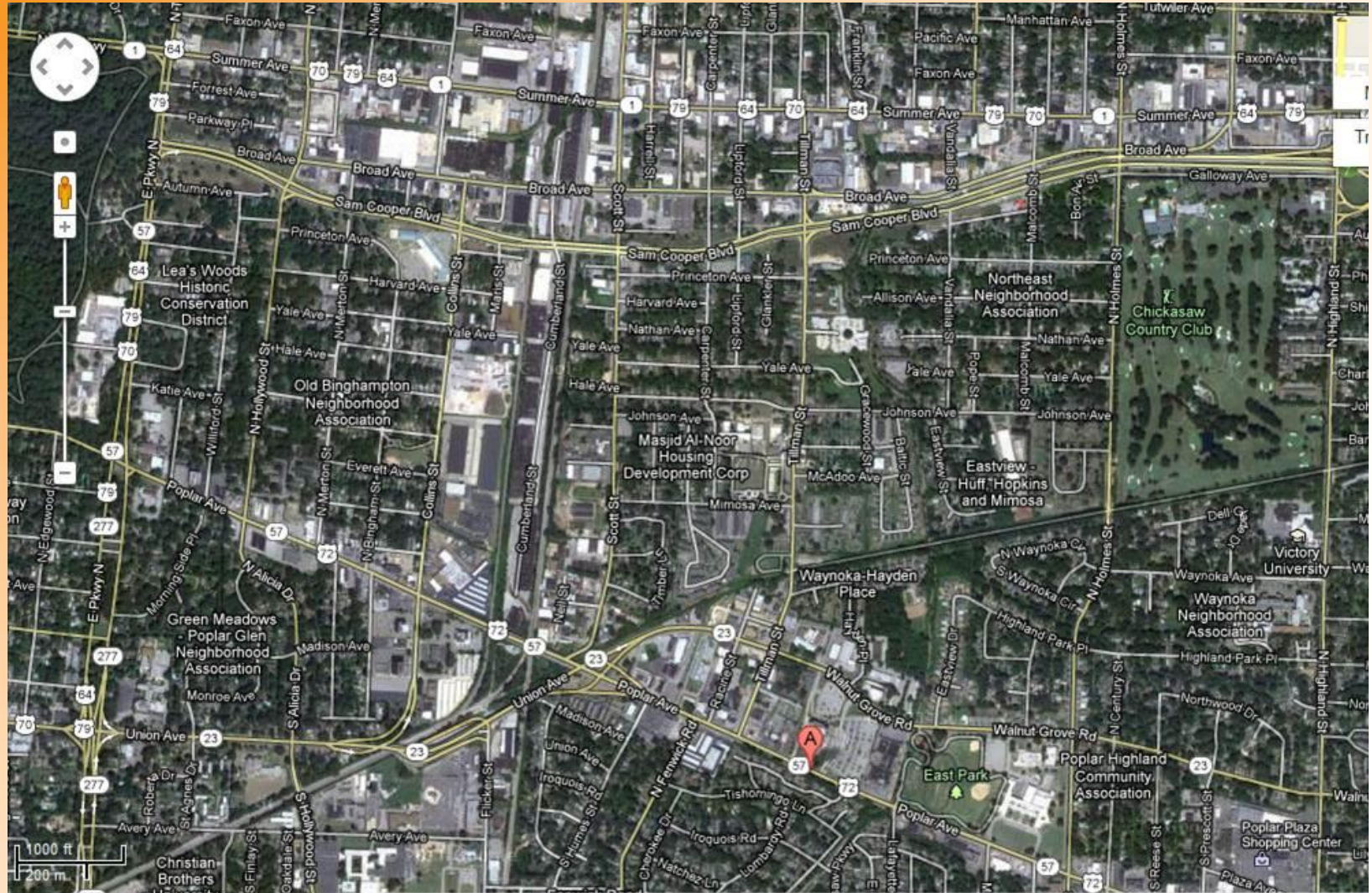
Tennessee Technological University (energy assessments)

University of Tennessee Center for Industrial Services (lean manufacturing and environment assistance to manufacturers)

Pathway Lending (low interest rate, term-friendly loans)

Pew Charitable Trust

Model includes other non-industrial sustainability projects





Lynn Reed



Debra Dupree



Don Stone

Keith.Ridley@Tennessee.edu
615.532.4922

www.e3.gov

Next Steps

Eastward Expansion of E3

Partnerships with Existing Industry
Organizations

Explore Integration of Sustainability Initiatives
in your community

On-going Sustainability Dialogue

Keith.Ridley@ Tennessee.edu
615.532.4922